
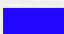

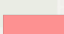




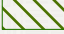
# City of Burnaby Soil Site Classification

Metro Vancouver Seismic Microzonation data,  
Presented at the Parcel scale

This map illustrates the soil types throughout the city of Burnaby classified in accordance with Article 4.1.8.4. of the 2020 National Building Code of Canada (NBCC). The site classes shown are defined on the basis of the average shear-wave velocity in the upper 30 meters of soil ( $V_{s30}$ ). We provide a general description of each site class to aid with interpretation (e.g., Site Class B denotes a "rock" site). In general, during a seismic event, the potential for amplification of ground shaking increases from Site Class A to Site Class E. This map is intended for regional planning purposes only and should not replace site-specific evaluations where normally required.

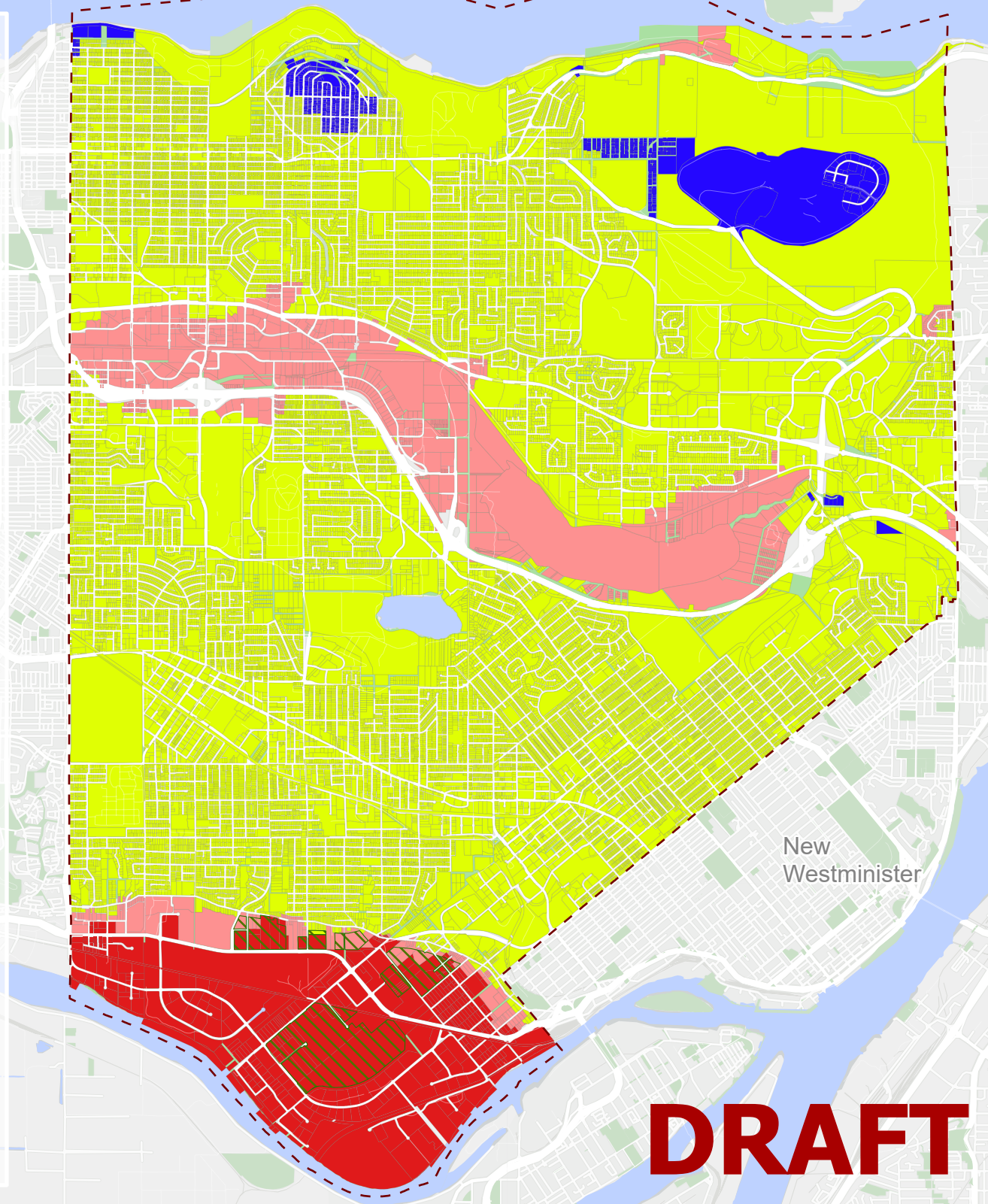
## Site Classes

-  A:  $V_{s30}$  greater than 1500 m/s (Hard Rock)
-  B:  $V_{s30}$  range of 760 - 1500 m/s (Rock)
-  C:  $V_{s30}$  range of 360 - 760 m/s (Very Dense Soil / Soft Rock)
-  D:  $V_{s30}$  range of 180 - 360 m/s (Stiff Soil)
-  E:  $V_{s30}$  range of 140 - 180 m/s (Soft Soil)

-  Park
-  Agricultural Areas
-  Municipal Boundary

# DRAFT

This map is derived using data from the Metro Vancouver seismic microzonation mapping project (MVSMMMP). More details here:  
<https://metrovanmicromap.ca/>



# DRAFT